

2013 TEXAN Retro

Travel Trailer Floor Plans



Your local **TEXAN ** Retro dealer is:

SKYLINE[®]
BRINGING AMERICA HOME. BRINGING AMERICA FUN.

Effective 2012

Standard Features

Interior

Cabinets

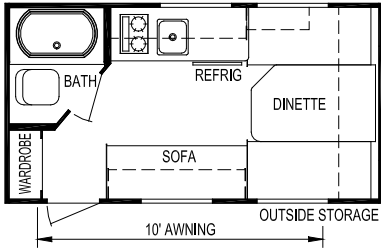
- Stylish Picture Frame Flat Panel Cabinet Doors
- High Pressure Laminate Counter Tops

Decor

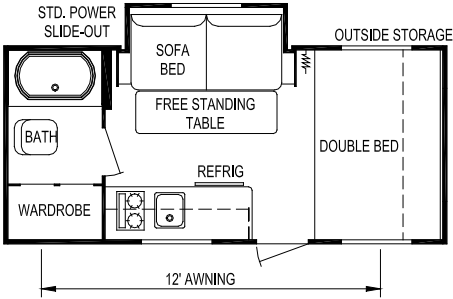
- Color-Coordinated Designer Interiors
- Embossed Vinyl Flooring
- Padded Dinette Seat Cushions
- Mini Blinds at All Windows Except Bunks

Kitchen & Living Room

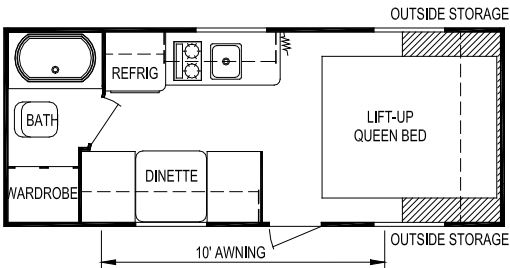
- 3 cu. ft. Dometic® Gas / Electric Refrigerator (Models 140, 170, 183 & 186)
- Dometic® Double-Door Refrigerator (Model 237, 239, 259 & 264)
- Wedgwood® 2 Burner Range Top (Models 140, 170, 183 & 186)
- Wedgwood® 3-Burner Range w/Oven & Piezo (Model 237, 239, 259 & 264)
- 0.7 cu. ft. Microwave Oven w/Turntable & Clock
- Acrylic Kitchen Sink w/Faucet
- 12 Volt Demand Water Pump
- 16,000 Btu Furnace (Models 140, 170, 183 & 186)
- 25,000 Btu Ducted Furnace (Model 237, 239, 259 & 264)
- 5,000 Btu Air Conditioner (Models 140, 170, 183 & 186)
- 13,500 Btu Roof Air Conditioner (Model 237, 239, 259 & 264)
- 35 amp 12 Volt Power Convertor w/120 Volt Load Center
- Six Gallon Gas Water Heater
- TV Antenna w/Living Area Jack
- Power Range Hood w/Light (Model 237, 239, 259 & 264)



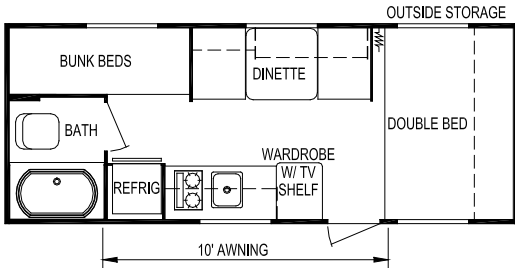
Model 140



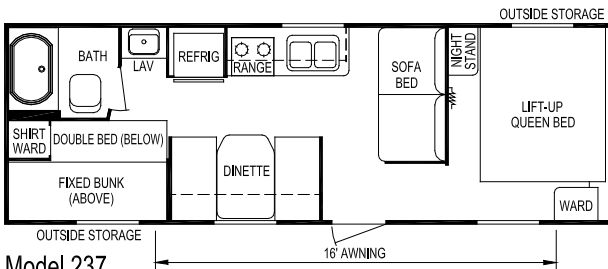
Model 170



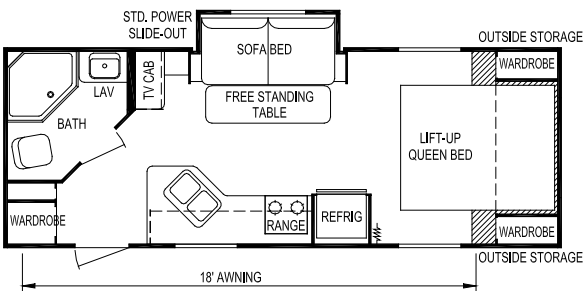
Model 183



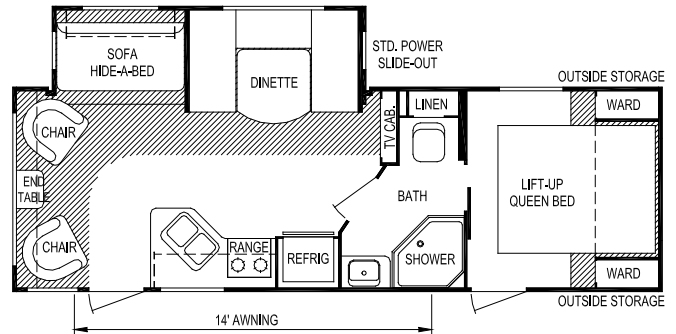
Model 186



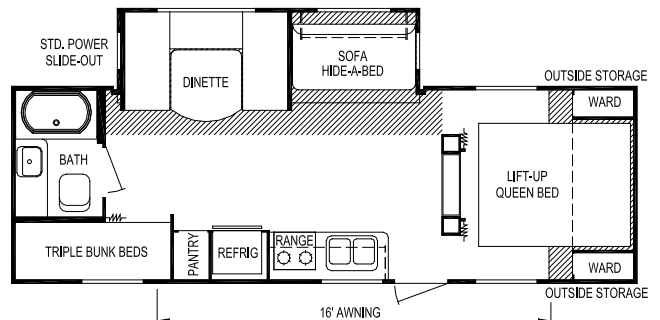
Model 237



Model 239



Model 259



Model 264

Bath

- ABS Tub w/Tub Faucet, Shower Hose & Head
- Shower Curtain
- Hand Flush Thetford Toilet
- Towel Ring & Toilet Paper Holder

Exterior

Roof Construction

- Seamless One-Piece Aluminum Roof (Models 140, 170, 183 & 186)
- Seamless One-Piece Rubber Roof w/ Manufacturer's 12-Year Warranty (Model 237, 239, 259 & 264)
- Awning Drip Rail & Down Spouts

Wall Construction

- Wall Studs on 16" Centers (Maximum)
- Steel Strap Reinforcement on Walls for Superior Durability

- R-7 Settle-Resistant Insulation
- Twist Locks on All Storage Doors
- Clamp Ring Radius Corner / Tinted Safety Glass Windows
- Patio Convenience Light
- Radius Entry Door w/Screen
- Assist Handle at Entry Door

Chassis Construction

- Cambered Tubular Steel Chassis w/Steel Outriggers (Models 140, 170, 183 & 186)
- Cambered I-Beam Steel Chassis w/Steel Outriggers (Models 237, 239, 259 & 264)
- Battery Rack
- Chassis-Mounted Entry Step
- Electric Brakes at All Wheels
- Radial Tires
- Safety Chains & Breakaway Safety Switch
- Two Stabilizer Jacks
- Sidewinder Tongue Jack w/Foot

Floor Construction

- 5/8" Tongue & Groove Floor Decking
- Tightly Sealed Woven Polyethylene Underbelly

Features

- Single 20 lb. LP Propane Tank (Models 140, 170, 183 & 186)
- Double 20 lb. LP Propane Tank (Models 237, 239, 259 & 264)
- Holding Tanks w/Drain Outlet
- Rear Bumper w/Sewer Hose Carrier
- Carefree Pioneer Lite® Side Awning

Security & Safety

- Smoke Detector
- Propane Leak Detectors
- Carbon Monoxide Alarm
- Flush Door Latch w/Integral Dead Bolt Lock
- Fire Extinguisher

Specifications

Model	140	170	183	186	237	239	259	264
Weights								
Unloaded Vehicle Weight (see Note 2)	2,025	2,725	2,450	2,475	4,100	4,000	6,125	5,275
Dry Hitch Weight	300	325	325	325	475	550	700	775
Dry Axle Weight	1,725	2,400	2,125	2,150	3,625	3,450	5,425	4,500
GVWR (Total Capacity of Trailer)	3,850	3,850	3,850	3,850	6,200	6,200	7,750	7,750
Carrying Capacity (see Note 2)	1,725	1,000	1,300	1,275	1,925	2,050	1,400	2,275
Accommodations								
Sleeping (standard / optional)	3	3	3	5	8	4	6	8
Bed Size	N/A	54" x 80"	60" x 74"	54" x 80"	60" x 74"	60" x 74"	60" x 74"	60" x 74"
Second Bed Size	N/A	N/A	N/A	(2) 28" x 76"	48" x 74" 28" x 76"	N/A	N/A	(3) 28" x 76"
Dinette Size	52" x 80"	N/A	30" x 76"	30" x 76"	40" x 71"	N/A	48" x 79"	48" x 79"
Sofa	22" x 59"	42" x 64"	N/A	N/A	42" x 64"	42" x 64"	44" x 74"	44" x 74"
Measurements								
Exterior Length (see Note 3)	16'-4"	18'-9"	20'-9"	21'-1"	27'-11"	25'-11"	29'-9"	28'-9"
Exterior Width (see Note 3)	84"	84"	84"	84"	96"	96"	96"	96"
Exterior Height (see Note 3)	9'-1"	9'-1"	9'-1"	9'-1"	9'-11"	10'-2"	11'-0"	11'-0"
Interior Height	73"	73"	73"	73"	76"	78"	78"	78"
Capacities								
Fresh Water System (gallons)	17	27	27	27	36	36	36	36
Gray Water Tank (gallons)	15	15	15	15	31	31	40	56
Black Water Tank (gallons)	9	9	9	9	31	31	40	31
Air Conditioner Size (Btu)	5,000	5,000	5,000	5,000	13,500	13,500	13,500	13,500
Awning Size	10'	12'	10'	10'	16'	18'	14'	16'
Convertor Size (amps)	35	35	35	35	35	35	35	35
Furnace Rating (Btu)	16,000	16,000	16,000	16,000	25,000	25,000	25,000	25,000
Propane Gas Capacity (pounds)	20	20	20	20	40	40	40	40
Tires	ST205/ 75R14-C	ST205/ 75R14-C	ST205/ 75R14-C	ST205/ 75R14-C	ST205/ 75R14-C	ST205/ 75R14-C	ST205/ 75R15-C	ST205/ 75R15-C
Water Heater (gallons)	6	6	6	6	6	6	6	6

Notes

(1) All weights, dimensions, and capacities shown are approximate values.

(2) Unloaded vehicle weight and carrying capacity will vary depending upon optional equipment. Full propane tanks are factored into carrying capacity. Skyline weighs every unit at the factory. See trailer weight information label located inside the front entry door for specific unloaded vehicle weight and cargo carrying capacity.

(3) Dimensions stated to industry standards. Exterior length includes approximately a four foot hitch on travel trailers. Exterior height includes air conditioner, if installed. Exterior width does not include the width of the awning, if installed.



Skyline Customer Satisfaction

Skyline Customer Satisfaction is more than just a promise. We believe you deserve quality in every aspect of ownership. To ensure your continued satisfaction, we're dedicated to providing you with a quality product along with the very best service available in our industry. Skyline's "Commitment of Excellence" will be a source of pride and satisfaction for you.

Contact your Skyline dealer for details.



NO-NONSENSE WARRANTY

Manufacturing defects reported to Skyline within one year after original retail delivery of your new Travel Trailer or Fifth Wheel by an authorized dealer will be corrected without charge and within reasonable times. Excluded are misuse (including lack of reasonable maintenance), minor imperfections, alterations, and dealer or owner improper transportation, installation, or hookup.

This warranty gives you specific legal rights. You may have other rights which vary from state to state.

Skyline's suppliers often provide additional warranties on their components beyond the Skyline factory bumper-to-bumper warranty. For example — the range, water heater, furnace, convertor, air conditioner, refrigerator, microwave and awning carry two-year supplier warranties. Ask your dealer for full details.

Manufacturer's Notice: All specifications, equipment, and prices are subject to change without prior notice. Production of all models subject to seasonal scheduling. Skyline Corporation reserves the right to improve a model without incorporating these changes in similar models produced at an earlier date.

Consult your automobile dealer and your recreational vehicle dealer to assure the proper match between tow vehicle and trailer. Tow vehicle and recreational unit must be properly equalized for efficient product performance and safety. Before you purchase your recreational vehicle, carefully consider the number of people it will accommodate and its end use. Manufacturer's load capacity restrictions and recommendations must be followed for safe and efficient product performance.

Your Retailer, an independent contractor, who is not an agent of Skyline Corporation, is the party responsible for your purchase contract and any additions, deletions, alterations, or attachments made to or in your recreational vehicle.



For the name of your nearest Skyline-built RV dealer, call:
Mansfield, Texas 1-800-962-7773

Go RVing.



Like us on Facebook

Visit us at our Web Site at www.skylinerv.com